

## International Journal of Innovative Research in Science, Engineering and Technology

(A High Impact Factor & UGC Approved Journal)

Website: [www.ijirset.com](http://www.ijirset.com)

Vol. 6, Issue 8, August 2017

# An Enhanced Bradley Thresholding Method for White Blood Cells Segmentation during Leukaemia and Normal Condition

S.Revathi<sup>1</sup>, S.Vishnu Priya Chowdhary<sup>2</sup>

M.Tech Scholar(DECS), Dept of ECE,School of Engg.& Technology, Sri Padmavathi Mahila Viswavidyalam,  
Tirupati, India<sup>1</sup>

Asst. Professor, Dept. of ECE, School of Engg.& Technology, Sri Padmavathi Mahila Viswavidyalam, Tirupati, India<sup>2</sup>

**ABSTRACT:** Tallying of White Blood Cells (WBC) and describing their core can give profitable data to the specialists with a specific end goal to recognize diverse maladies or phase of a specific sickness. The manual technique is a tedious procedure and has a great deal of error. Then again, the machine (hematological analyzer) based technique are extremely costly. Computerized picture preparing can be a less tedious and practical technique for numbering and portraying the WBC. With a specific end goal to Count or portray WBC by picture preparing, appropriate division is the key test. In this paper we proposed a technique called Bradley thresholding for versatile thresholding utilizing the necessary picture of the info. This Bradley thresholding is utilized as a part of request to consider spatial varieties in enlightenment. Nonetheless, this system is more strong to brightening changes in the picture and additionally straightforward and simple to actualize.

**KEYWORDS:** White blood cells (WBC); segmentation; leukemia; morphological operation; Bradley thresholding

### I. INTRODUCTION

Computerized picture preparing furnishes us with the chance to remove some important and valuable data from a picture. If there should arise an occurrence of tallying WBC and portraying their core advanced picture preparing has the favourable position on required time and cost over the customary strategies. To finish that the key stride is the best possible division of WBC. Already numerous analysts took a shot at platelet division. Edge discovery is a very proficient approach for WBC and their core division [1][2]. Where, diverse shading space change is utilized for dividing three various types of platelets [3][4]. Power law change was likewise utilized for WBC sectionalisation [5]. Limit bolster vector is another intelligent strategy recommended by Min Wang [6]. Mostafa Mohamed and Behrouz Far proposed two distinctive division calculations for WBC core. One depends on green segment of the picture [7] and another depends on Gram-Schmidt vector control [8]. They additionally presented a double division procedure for core and cytoplasm, in light of watchful edge identification, morphological operation, chessboard separate change, and neighborhood minima end and watershed change [9]. Layza Baldo likewise proposed such a double strategy where self-Dual Multiscale morphologic Optical filtering of the stone engraving yields a picture (record of pixels) that structures the crude contribution to the Optical Character Recognition System. The yield is the arrangement of perceived characters. Preprocessing is the principal period of archive examination. The reason for preprocessing is to enhance the nature of the picture being prepared. It makes the resulting periods of picture preparing like acknowledgment of characters simpler. Thresholding is one of the preprocessing techniques talked about in this paper. In thresholding, the shading picture or dark scale picture is diminished to a parallel picture.

Derek Bradley et al. proposed a technique for versatile thresholding utilizing the basic picture of the info. Versatile thresholding is utilized as a part of request to consider spatial varieties in brightening. Proposed technique is an augmentation of a past method(Wellner' strategy). In any case, this procedure is more vigorous to brightening changes in the picture and in addition basic and simple to actualize. To figure the basic picture, store at every area,  $I(x, y)$ , the

# International Journal of Innovative Research in Science, Engineering and Technology

(A High Impact Factor & UGC Approved Journal)

Website: [www.ijirset.com](http://www.ijirset.com)

Vol. 6, Issue 8, August 2017

entirety of all  $f(x, y)$  terms to one side or more the pixel  $(x, y)$ . This is expert in direct time utilizing the fol This thresholding strategy is an expansion of Wellner's technique. The principle idea of Wellner's strategy is that every pixel is contrasted with moving normal of last  $s$  pixel seen normal of the encompassing pixels. Principle preferred standpoint of this method is that lone a solitary go through the picture is required. One noteworthy issue with this technique is that binarization result is subject to the filtering request of the pixels. Further, the moving normal is not a decent portrayal of the encompassing pixels. Proposed system register the normal of a window of pixels based on every pixel. This is a superior normal for correlation since it considers neighbouring pixels on all sides. The normal calculation is expert in direct time by utilizing the necessary picture. In first pass this strategy ascertain the fundamental picture through the information picture. In a moment pass, register the normal utilizing the basic picture for every pixel in consistent time and after that play out the correlation with allot a pixel in either forefront or foundation class. Bradley's strategy for picture binarization perform well for uneven light pictures and appropriate for handling live video streams at a constant edge rate, it a profitable instrument for intuitive applications, for example, expanded reality. It likewise looks at the area of every pixel, setting the shine to dark if the pixels brilliance is  $t$  percent lower than the normal splendor of encompassing pixels. lowing condition for every pixel.

## II.RELATED WORK

The essential target of the work is to partition the WBC from the tiny picture of recolored periphery blood film in the midst of leukemia and normal condition. The rule differentiate between these two conditions is the accessibility among WBCs. In the midst of run of the mill condition the WBCs are secluded from each other and in the midst of leukemia those breeze up doubtlessly related, in light of the proximity of effect cell. The proposed count has been delivered in such a route, to the point that the WBCs can be segregated in the midst of leukemia and the division method does not hamper in the midst of regular condition. The little pictures of recolor periphery blood film has been accumulated from the school degliStudi di Milano, Italy, gave by Fabio Scotti. The proposed computation requires shading space change, shading thresholding, morphological operation et cetera. The entire written work PC programs are done by utilizingMATLAB.

RGB to  $L^*a^*b^*$  shading space change and shading thresholding gives the portioned picture of WBC core platelets and megakaryocytes. Normal channel is connected to expel any sort of irregular clamor. The incentive for applying normal channel is picked as a way that it won't cause and mischief to the pictures. The marker controlled watershed is connected to isolate the associated WBC core amid leukemia condition. The platelets and megakaryocytes have been expelled by region expulsion procedure and morphological shutting operation is connected to remake the broken WBC because of marker controlled watershed work. The fundamental objective of the examination is to fragment the WBC core from the infinitesimal picture of re-colored fringe blood film. To show the calculation, some arbitrary pictures were browsed the information the pictures of leukemia condition. are the pictures of typical condition. In typical condition WBCs are isolated from each other yet 2(d), 2(e) and 2(f) are the pictures which contain megakaryocytes. These are the youthful phase of the platelets. Shading is same as WBC and morphological surface is greater than develop platelets however littler than WBC. All the information pictures were in the RGB shading space.

Otsu's overall thresholding system is associated with perceive an overall thresholding estimation of the dull scale picture. The numerical state of Otsu's overall thresholding procedure. Where,  $\sigma_w$  is within class change,  $\sigma_i$  is the class contrast of nearer view or establishment,  $T$  is the perfect thresholding impetus to binarize the photo and class probabilities,  $v_1$  and  $v_2$ , are surveyed from histogram. Moreover, using the overall thresholding regard the dull scale picture is changed over into matched picture by the going with strategy

### Nucleus Segmentation

For center division, we use the watershed change by IFT, a general gadget for the arrangement of picture taking care of heads in perspective of system Since the condition of the WBC center is basic in a couple of further assignments, for instance, arrange for differential numbering purposes, we use a way cost work that considers sensible picture qualities. To stay away from over-division, it is essential to pick a hidden course of action of inside seeds with the end goal that solitary the interest objects are stamped. Since WBC center is darker than the straggling leftovers of the photo, we basically play out a thresholding to obtain (no short of what) one example of each WBC (we used 90 as farthest point

# International Journal of Innovative Research in Science, Engineering and Technology

(A High Impact Factor & UGC Approved Journal)

Website: [www.ijirset.com](http://www.ijirset.com)

Vol. 6, Issue 8, August 2017

an impetus for all tests). As a result of lighting up inconsistencies, the separation between the center and cytoplasm points of confinement can change significantly, recommending a slight edge picture. Thus, its use as outside seed can cause a spilling in the resulting division. There are a couple of developments of the watershed by IFT to avoid this issue, for instance, Tree Pruning, which in advance recognize spilling pixels. For our WBC picture set it was not essential to use such refined techniques.

To hinder spilling, we perform iterative employments of the director described at a fitting scale. This strategy makes a streamlined picture having a homogeneous dissemination on the diminish levels, which prompts a shape regularization that upgrades the idea of the point picture. This direct is elucidated by the scale-space and blending properties of the overseer. In this paper, we consider emphases at scale one for most bit of the tests. depicts this change. Note that the incline expelled from the main picture is feeble, that is, it doesn't generally have higher regards on confine pixels, which causes a spilling. The shape regularization got in the photo took care of with the head has a quality prevalent than when traditional methodologies like high-lift and Laplacian are used. Moreover, this arrangement can be associated with uproarious pictures, since the change plays out an isolating in the main picture, while protecting and updating the points of confinement. Finally, since the cell center is not sharp, it is vital to discard little districts related with the center that identify with cytoplasm pixels.

## III.METHODOLOGY

### Bradley Thresholding Method :

Derek Bradley et al. proposed a strategy for versatile thresholding utilizing the fundamental picture of the info. Versatile thresholding is utilized as a part of request to consider spatial varieties in enlightenment. Proposed strategy is an augmentation of a past method(Wellner' technique). Be that as it may, this procedure is more strong to enlightenment changes in the picture and additionally basic and simple to actualize. To process the indispensable picture, store at every area,  $I(x, y)$ , the whole of all  $f(x, y)$  terms to one side or more the pixel  $(x, y)$ . This is expert in straight time utilizing the accompanying condition for every pixel.

$$I(x,y)=f(x-1,y)+I(x,y-1)$$

In the wake of changing over the given picture into necessary picture, entirety of the capacity for any rectangle with upper left corner  $(x1, y1)$  and bring down right corner  $(x2, y2)$  can be figured in steady time utilizing the accompanying condition, This thresholding strategy is an augmentation of Wellner's technique. The fundamental idea of Wellner's technique is that every pixel is contrasted with moving normal of last  $s$  pixel seen normal of the encompassing pixels. Primary preferred standpoint of this system is that exclusive a solitary go through the picture is required. One noteworthy issue with this strategy is that binarization result is reliant on the filtering request of the pixels. Further, the moving normal is not a decent portrayal of the encompassing pixels. Proposed procedure figure the normal of a  $s \times s$  window of pixels revolved around every pixel. This is a superior normal for correlation since it considers neighbouring pixels on all sides. The normal calculation is expert in straight time by utilizing the fundamental picture. In first pass this technique ascertain the necessary picture through the info picture. In a moment pass, figure the  $s \times s$  normal utilizing the vital picture for every pixel in consistent time and afterward play out the correlation with relegate a pixel in either closer view or foundation class. Bradley's technique for picture binarization perform well for uneven enlightenment pictures and reasonable for handling live video streams at a continuous edge rate, it a significant device for intuitive applications, for example, expanded reality. It additionally inspects the area of every pixel, setting the brilliance to dark if the pixels splendor is  $t$  percent lower than the normal shine of encompassing pixels.

# International Journal of Innovative Research in Science, Engineering and Technology

(A High Impact Factor & UGC Approved Journal)

Website: [www.ijirset.com](http://www.ijirset.com)

Vol. 6, Issue 8, August 2017

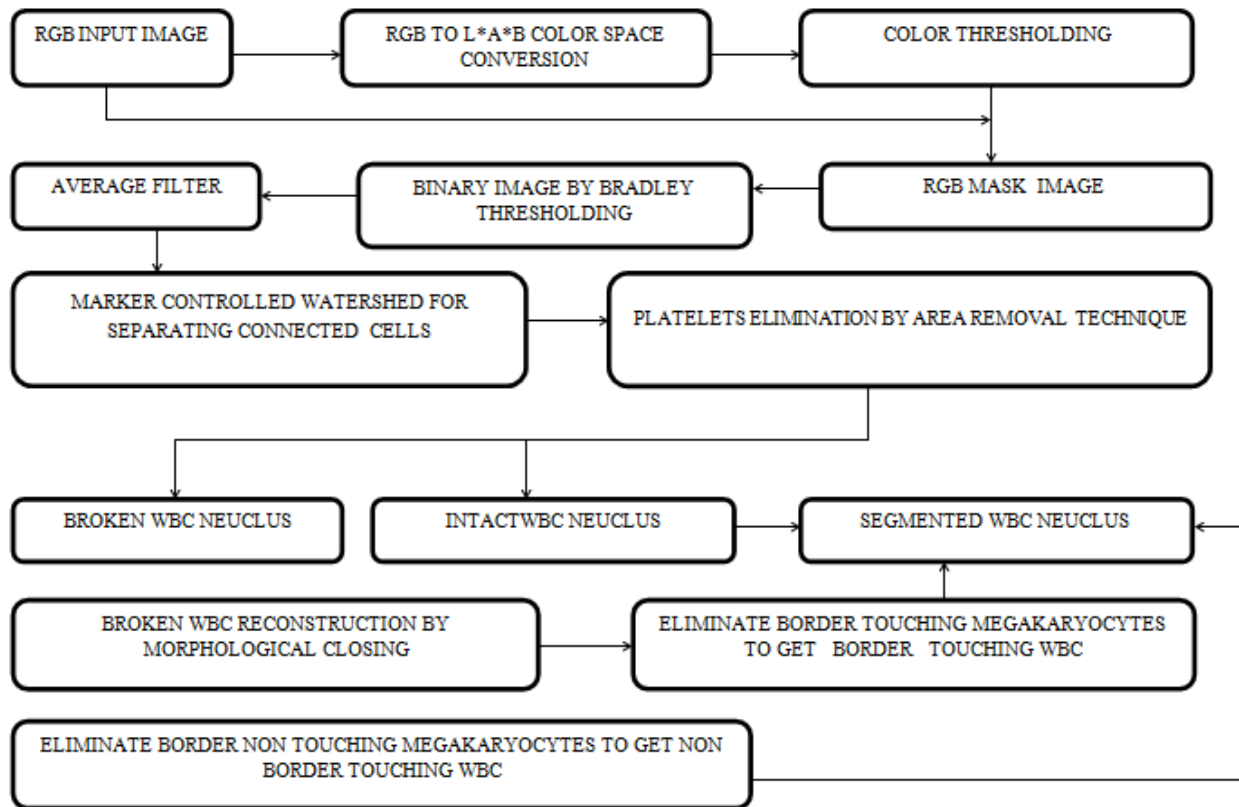


Figure 1. Block diagram of proposed algorithm

RGB to L\*a\*b\* shading space change and shading thresholding gives the sectioned picture of WBC core platelets and megakaryocytes (if display). Normal channel is connected to evacuate any sort of arbitrary commotion. The incentive for applying normal channel is picked as a way that it won't cause and mischief to the pictures. The marker controlled watershed is connected to isolate the associated WBC core amid leukemia condition. The platelets and megakaryocytes have been evacuated by territory expulsion method and morphological shutting operation is connected to remake the broken WBC because of marker controlled watershed work. The fundamental objective of the exploration is to portion the WBC core from the tiny picture of recolored fringe blood film. To exhibit the calculation, some irregular pictures were browsed the information the pictures of leukemia condition. are the pictures of typical condition. Bradley overall thresholding method is associated with perceive an overall thresholding estimation of the dull scale picture. The numerical state of Bradley overall thresholding procedure. Where,  $\sigma_w$  is within class vacillation,  $\sigma_i$  is the class contrast of nearer view or establishment,  $T$  is the perfect thresholding motivating force to binarize the photo and class probabilities,  $v_1$  and  $v_2$ , are surveyed from histogram. Moreover, using the overall thresholding regard the dull scale picture is changed over into combined picture by the going with technique A normal channel is connected on the parallel picture to wipe out any sort of irregular clamor. At that point marker controlled watershed is connected to isolate associated WBC amid leukemia. The marker controlled watershed requires two pictures one is marker and another is cover. The marker picture is made by Euclidean separation change. This capacity decides the separation from each zero pixel to its closest nonzero pixel. subsequent stage platelets can be expelled by zone dispose of method and the recreation should be possible to the fringe wbc and afterward dispensing with the non outskirts megakaryocytes to get the non flanked touching wbc .Then at long last the portion wbc can be isolated amid the lukaemia condition .

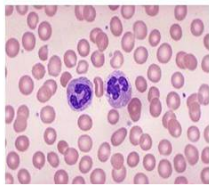
# International Journal of Innovative Research in Science, Engineering and Technology

(A High Impact Factor & UGC Approved Journal)

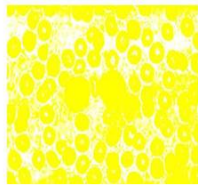
Website: [www.ijirset.com](http://www.ijirset.com)

Vol. 6, Issue 8, August 2017

## IV.RESULTS



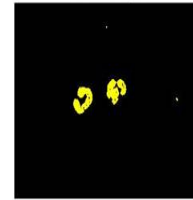
(a)



(b)



(c)



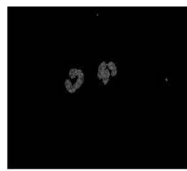
(d)

Figure1: (a) input image, (b) L\*a\*b converted image

Figure2: (c) colour threshold image, (d) L\*a\*b converted mask image



(e)

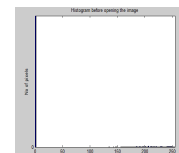


(f)

Figure3: (e) RGB mask image, (f) Gray mask image

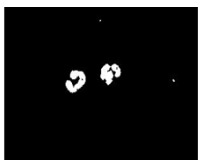


(g)



(h)

Figure4: (g) Highlighted image, (h)Histogram before opening the image

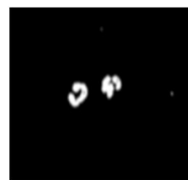


(i)



(j)

Figure5: (i) Bradley binary image, (j) Average filtered image

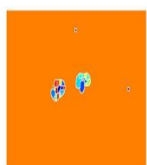


(k)



(l)

Figure6: (k) Gaussian filtered image, (l) Gradient magnitude



(m)

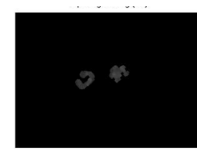


(n)

Figure7: (m) Watershed segmentation, (n)Opening(lo)



(O)



(P)

Figure8: (o) Opening by reconstruction (lobr), (p) Opening closing(loc)

# International Journal of Innovative Research in Science, Engineering and Technology

(A High Impact Factor & UGC Approved Journal)

Website: [www.ijirset.com](http://www.ijirset.com)

Vol. 6, Issue 8, August 2017



**Figure9:** (q) Opening closing by reconstruction(lobrcbr), (r) regional maxima opening closing by reconstruction(rgm).



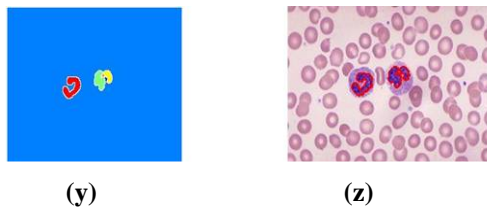
**Figure10:** (s)Regional maxima superimposed on original image(I2), (t)Modified maxima superimposed on original image(rgm4).



**Figure11:** (u) After eliminating platelets, (v) Broken watershed nucleus.



**Figure12:**(w) Gradient magnitude, (v) Markers and objects superimposed on original image.



**Figure13:** (y) coloured watershed label matrix, (z) Output image

## V. CONCLUSION

Despite the fact that, the proposed calculation indicated general more precision considering both the condition utilizing accessible dataset, the utilization of astounding pictures is recommended. The divided picture can be utilized for encourage core portrayal and characterize the individuals from WBC family. There is likewise chance to enhance the division system amid various illnesses. The further advancement is intended to distribute it as an intelligent application that will utilize the calculation with slight changes.

## REFERENCES

- [1] Jha, K.K.; Das, B.K.; Dutta, H.S., "Detection of abnormal blood cells on the basis of nucleus shape and counting of WBC," in Green Computing Communication and Electrical Engineering (ICGCCCE), 2014 International Conference on, vol., no., pp.1-5, 6-8 March 2014.
- [2] Hari, J.; Prasad, A.S.; Rao, S.K., "Separation and counting of blood cells using geometrical features and distance transformed watershed," in Devices, Circuits and Systems (ICDCS), 2014 2<sup>nd</sup> International Conference on, vol., no., pp.1-5, 6-8 March 2014
- [3] Tulsani, H.; Gupta, R.; Kapoor, R., "An improved methodology for blood cell counting," in Multimedia, Signal Processing and Communication Technologies (IMPACT), 2013 International Conference on, vol., no., pp.88-92, 23-25 Nov. 2013

# International Journal of Innovative Research in Science, Engineering and Technology

(A High Impact Factor & UGC Approved Journal)

Website: [www.ijirset.com](http://www.ijirset.com)

Vol. 6, Issue 8, August 2017

- [4] Sharif, J.M.; Miswan, M.F.; Ngadi, M.A.; Salam, M.S.H.; Mahadi bin Abdul Jamil, M., "Red blood cell segmentation using masking and watershed algorithm: A preliminary study," in Biomedical Engineering (ICoBE), 2012 International Conference on, vol., no., pp.258-262, 27-28 Feb. 2012
- [5] Gopinath, L.; Sivasubramaniam, K.; Raguramajan, M.; Raajan, N.R., "Analysis of leukocyte blood cell for medical diagnosis using sectionalisation," in Advances in Electrical Engineering (ICAEE), 2014 International Conference on, vol., no., pp.1-4, 9-11 Jan. 2014
- [6] Min Wang; Rong Chu, "A novel white blood cell detection method based on boundary support vectors," in Systems, Man and Cybernetics, 2009.SMC 2009. IEEE International Conference on, vol., no., pp.2595-2598, 11-14 Oct. 2009
- [7] Mohamed, M.; Far, B., "An enhanced threshold based technique for white blood cells nuclei automatic segmentation," in e-Health Networking, Applications and Services (Healthcom), 2012 IEEE 14th International Conference on, vol., no., pp.202-207, 10-13 Oct. 2012.
- [8] Mohamed, M.M.A.; Far, B., "A Fast Technique for White Blood Cells Nuclei Automatic Segmentation Based on Gram-Schmidt Orthogonalization," in Tools with Artificial Intelligence (ICTAI), 2012 IEEE 24th International Conference on, vol.1, no., pp.947- 952, 7-9 Nov. 2012.
- [9] Mohammed, E.A.; Mohamed, M.M.A.; Naugler, C.; Far, B.H., "Chronic lymphocytic leukemia cell segmentation from microscopic blood images using watershed algorithm and optimal thresholding," in Electrical and Computer Engineering (CCECE), 2013 26th Annual IEEE Canadian Conference on, Regina, SK, 2013, pp.1-5.
- [10] Dorini, L.B.; Minetto, R.; Leite, N.J., "Semiautomatic White Blood Cell Segmentation Based on Multiscale Analysis," in Biomedical and Health Informatics, IEEE Journal of, vol.17, no.1, pp.250-256, Jan. 2013
- [11] Kumar, B.R.; Joseph, D.K.; Sreenivas, T.V., "Teager energy based blood cell segmentation," in Digital Signal Processing, 2002. DSP 2002. 2002 14th International Conference on, vol.2, no., pp. 619- 622 vol.2, 2002
- [12] P.S.Hiremath, ParashuramBannigidad and SaiGeeta, "Automated Identification and Classification of White Blood Cells (Leukocytes) in Digital Microscopic Images," in IJCA, Special Issue on, RTIPPR (2):59-63, 2010. Published By Foundation of Computer Science.
- [13] Sinha, N.; Ramakrishnan, A.G., "Automation of differential blood count," in TENCON 2003. Conference on Convergent Technologies for the Asia-Pacific Region, vol.2, no., pp.547-551 Vol.2, 15-17 Oct. 2003.
- [14] Huey Nee Lim; Mashor, M.Y.; Supardi, N.Z.; Hassan, R., "Color and morphological based techniques on white blood cells segmentation," in Biomedical Engineering (ICoBE), 2015 2nd International Conference on, vol., no., pp.1-5, 30-31 March 2015.
- [15] Mohapatra, S.; Patra, D.; Kumar, K., "Blood microscopic image segmentation using rough sets," in Image Information Processing (ICIIP), 2011 International Conference on, vol., no., pp.1-6, 3-5 Nov. 2011.